

SPECIFICATION

MODEL:B13004-QI

PART NO: _____

VERSION: V1.00

Approver		Check	Design
GM	PM		

Customer Confirm

Content

1	Software Register	3
2	User Interface	6
3	Operating Instructions	9

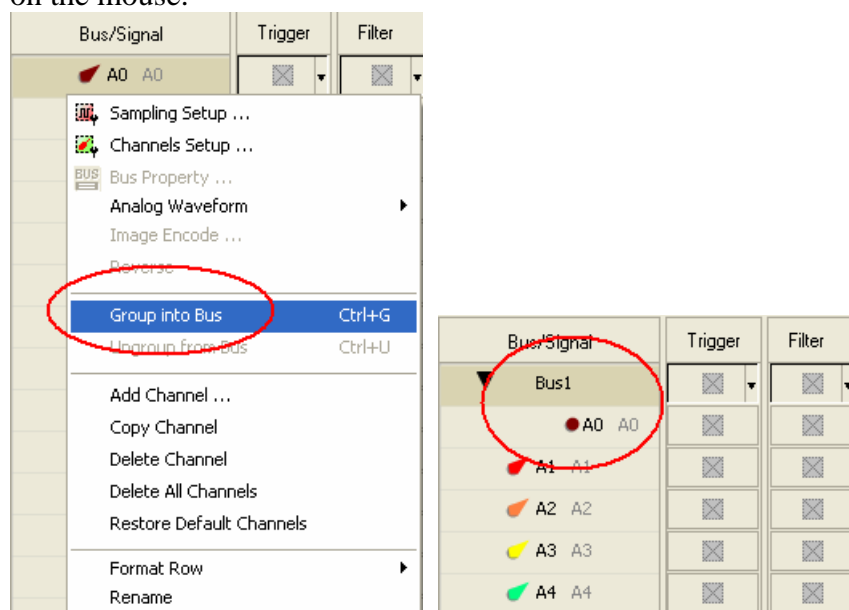
1 Software Register

Please register the software as the following steps:

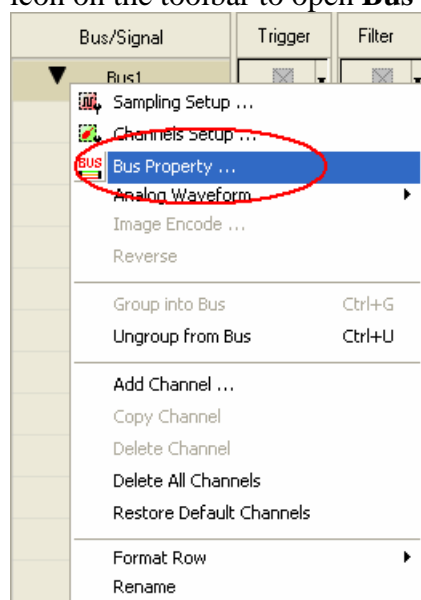
※ Remark1: The registration steps for all protocol analyzers are the same; you can complete the registration by following procedures. Following is an example on how to register the Protocol Analyzer BUS.

※ Remark2: We won't have additional notice for you, when there is any modification of the module specification. If there is some unconformity caused by the module version upgrade, users should take the module software as the standard.

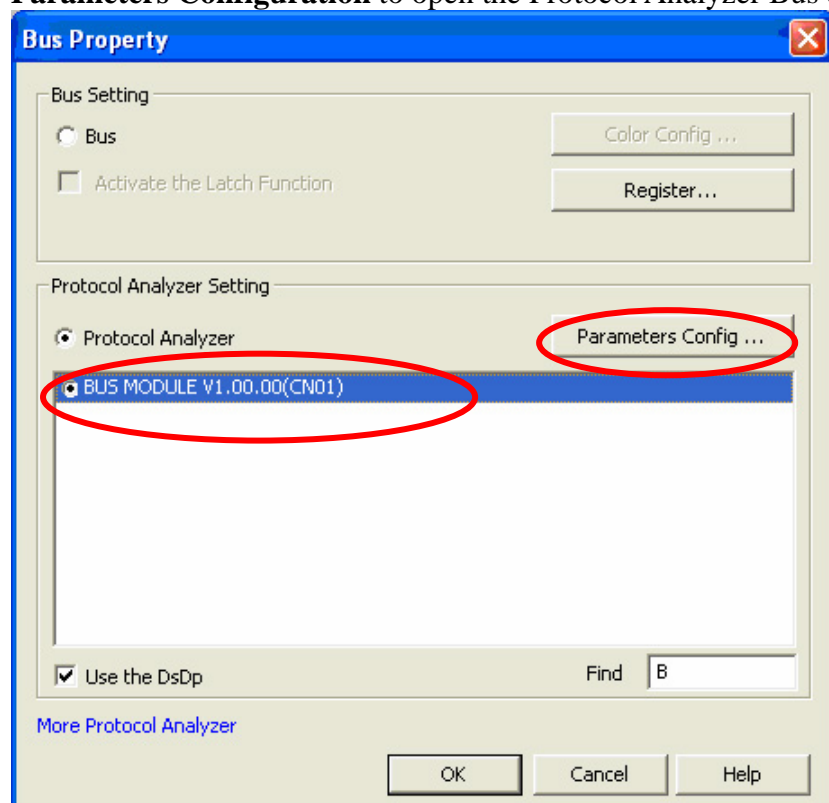
STEP 1. Open the Logic Analyzer and group the unanalyzed channels into **Bus1** by pressing the **Right Key** on the mouse.



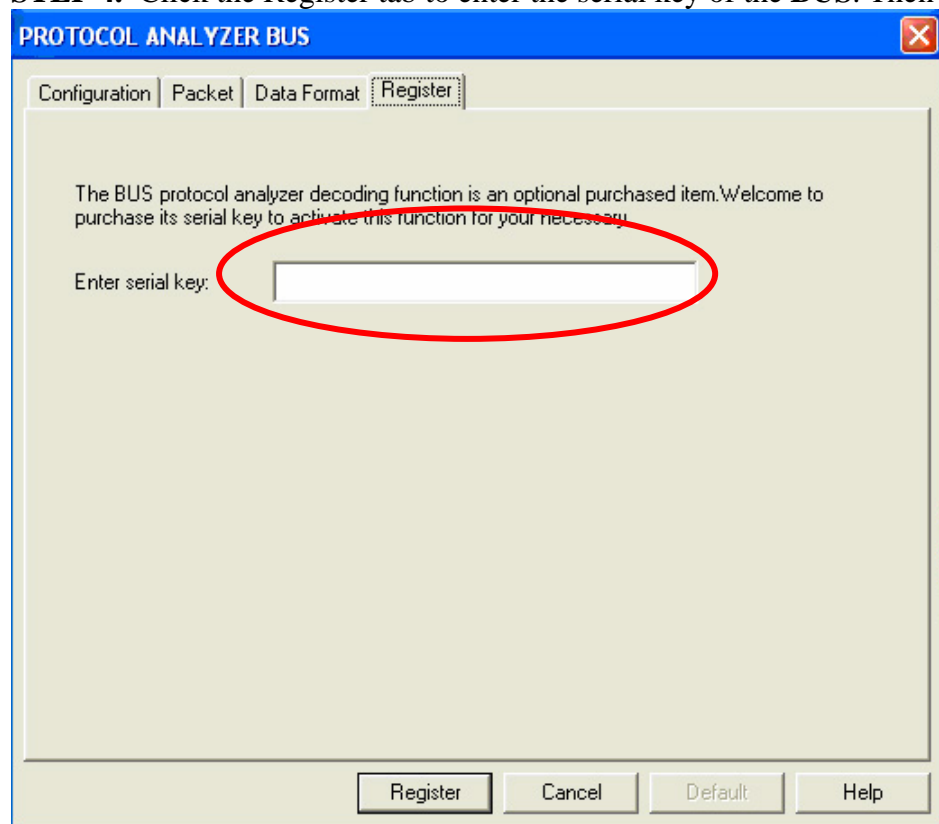
STEP 2. Select **Bus1**, and press **Right Key** on the mouse to list the menu, then click **Bus Property** or **Bus** icon on the toolbar to open **Bus Property** dialog box.



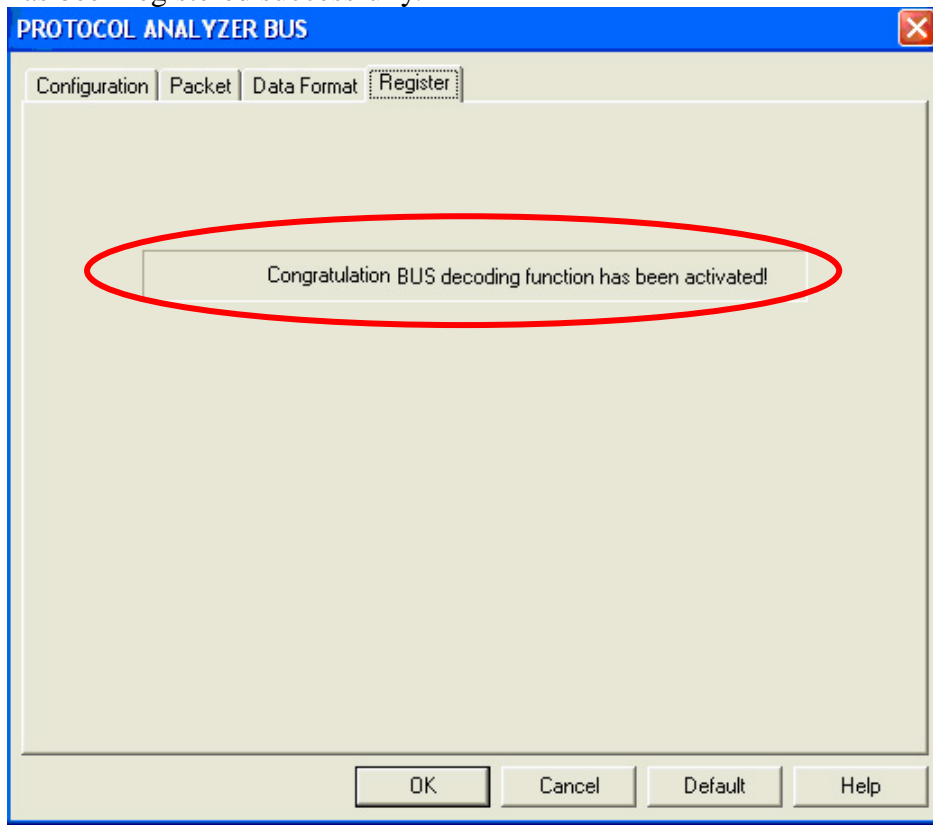
STEP 3. Select the Protocol Analyzer, and then choose **BUS MODULE V1.00.00 (CN01)**. Next click **Parameters Configuration** to open the Protocol Analyzer Bus dialog box.



STEP 4. Click the Register tab to enter the serial key of the **BUS**. Then click **Register**.



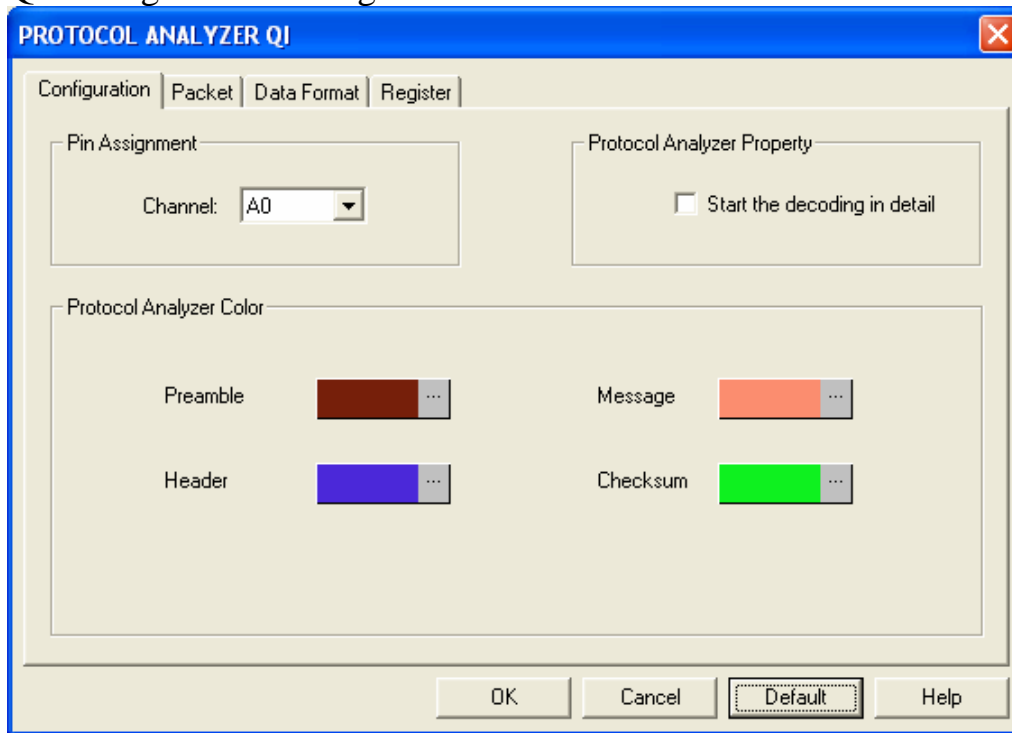
STEP 5. After clicking the Register button, the following dialog box will appear; it denotes that the BUS has been registered successfully.



2 User Interface

In the configuration, please refer to below images to set QI module.

QI Configuration Dialog Box

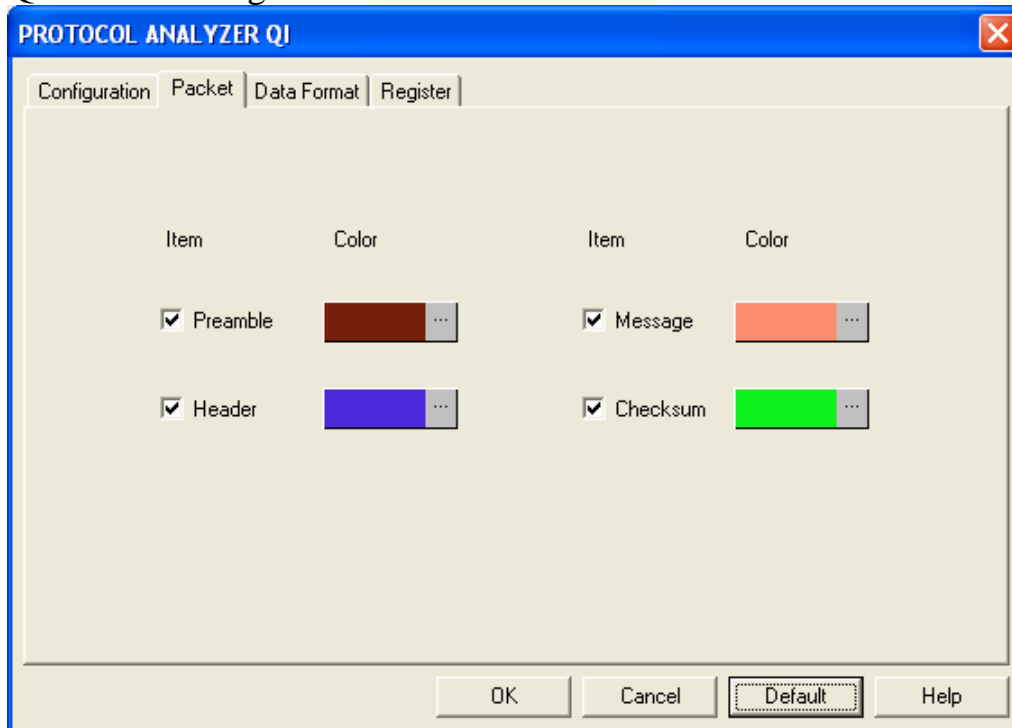


Pin Assignment: QI only needs one channel to decode signals; it is A0 by default.

Start the decoding in detail: If it is selected, Header and Message would be decoded in detail, and Header would display different packets according to its value. It is not selected by default.

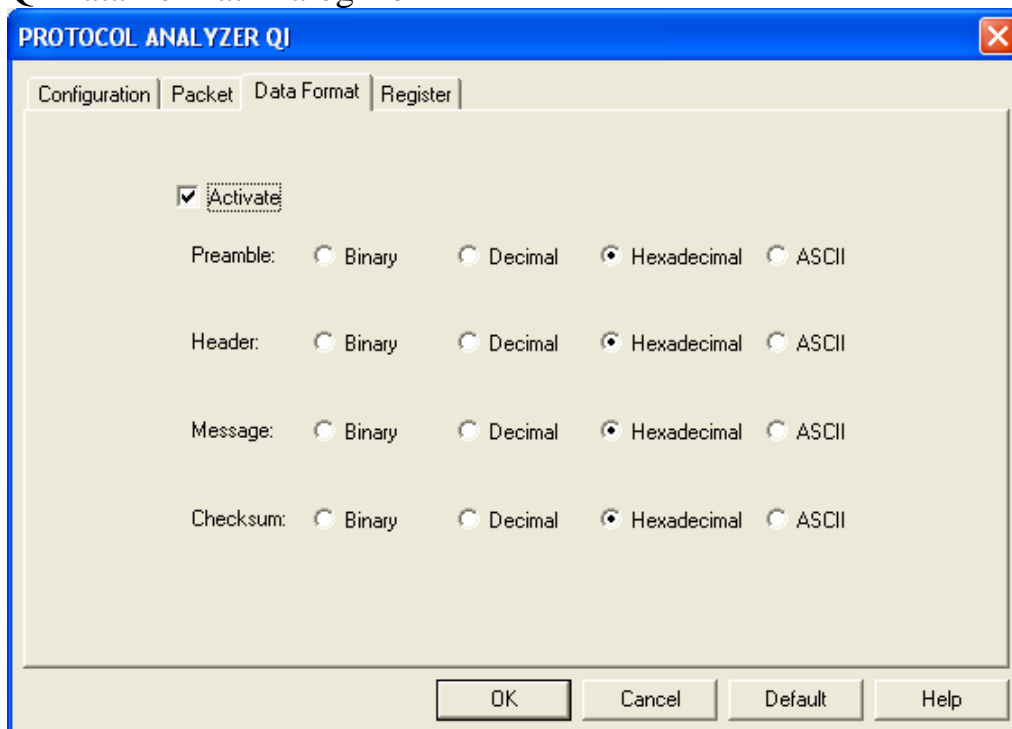
Protocol Analyzer Color:
The color can be varied by users.

QI Packet Dialog Box



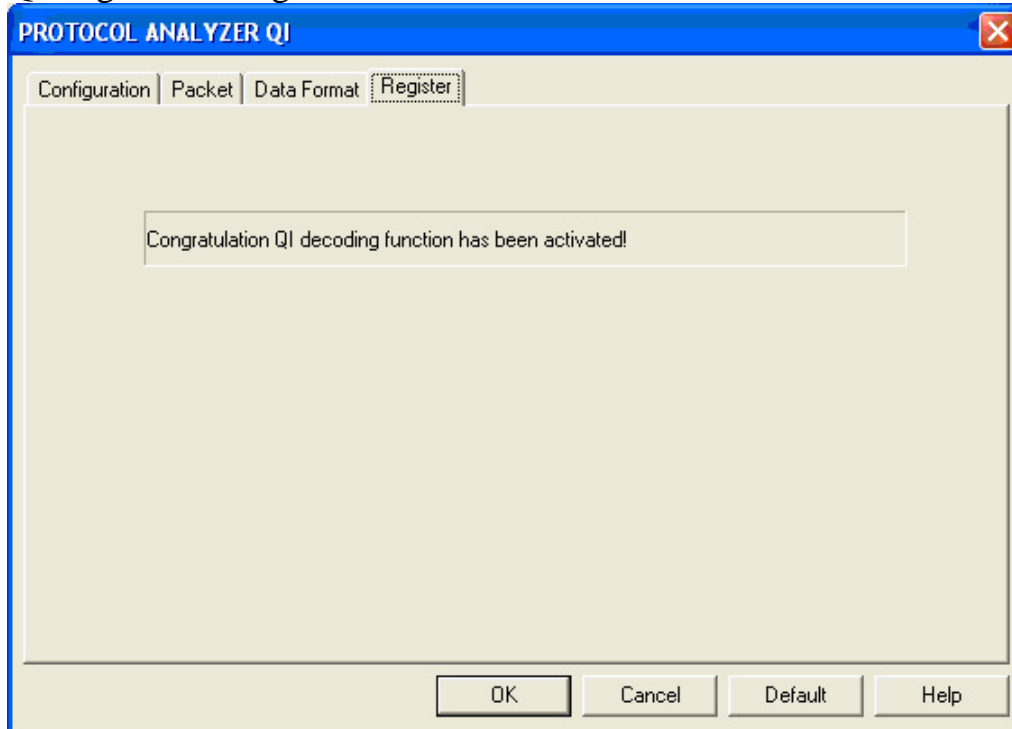
In the Packet dialog box, users can vary the color of items and select items to be displayed.

QI Data Format Dialog Box



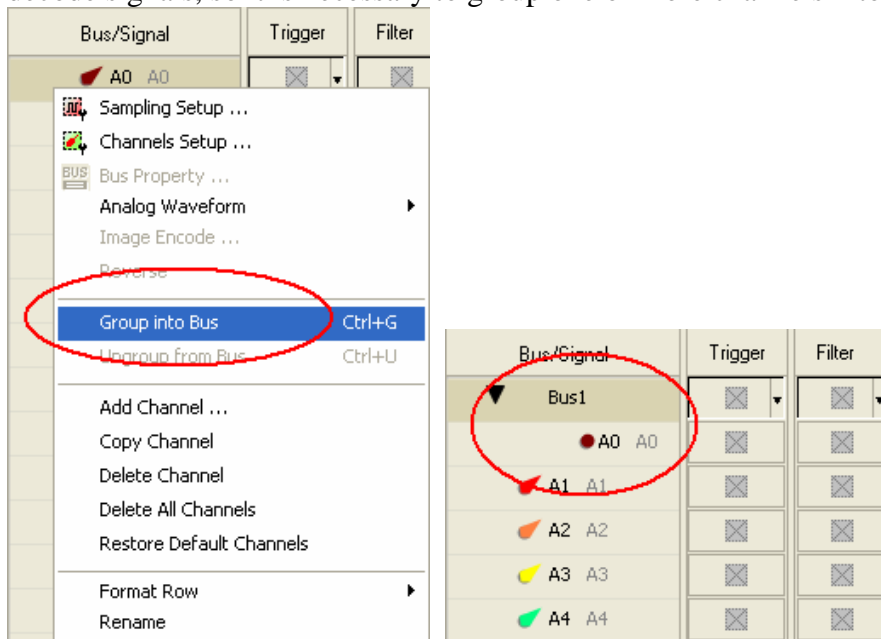
When the option 'Activate' is selected, users could self-define the data format of Preamble, Header, Message and Checksum; when not selected, their data formats are decided by the settings of main program.

QI Register Dialog Box

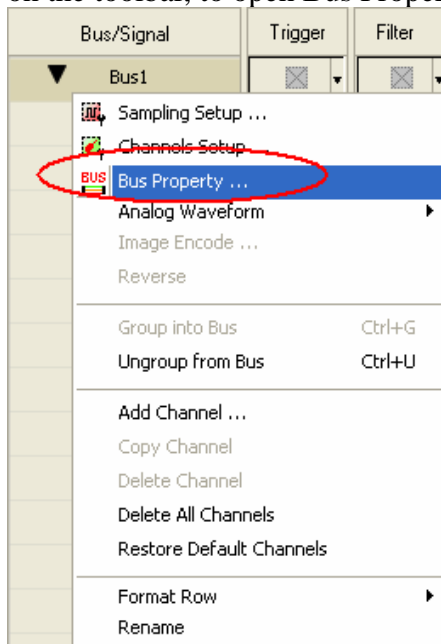


3 Operating Instructions

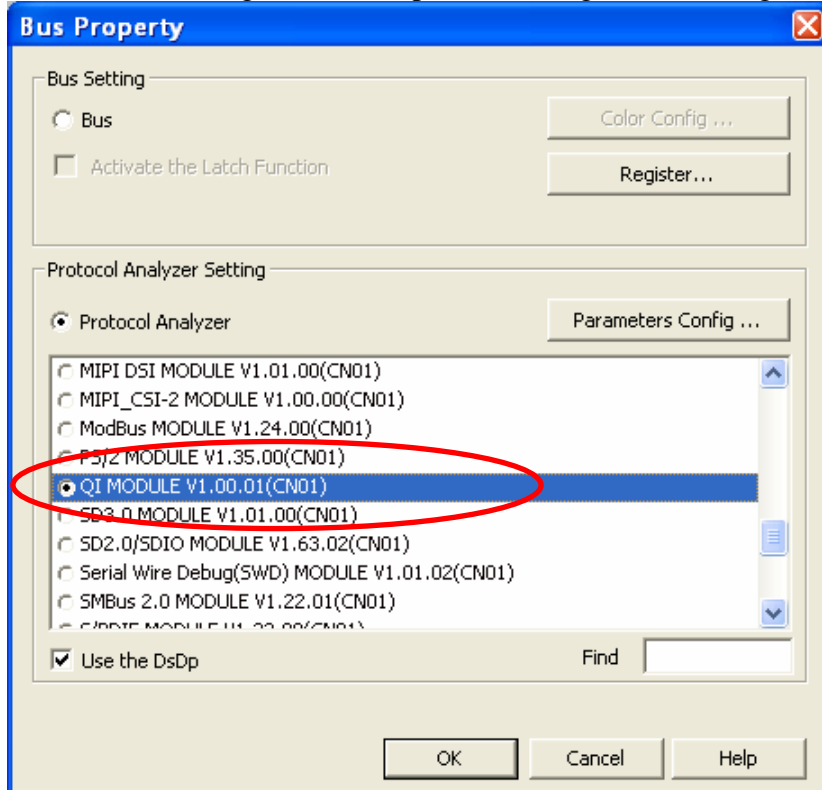
STEP 1. Group A0 into Bus1 by pressing the Right Key on the mouse. QI only needs one channel to decode signals, so it is necessary to group one or more channels into a Bus.



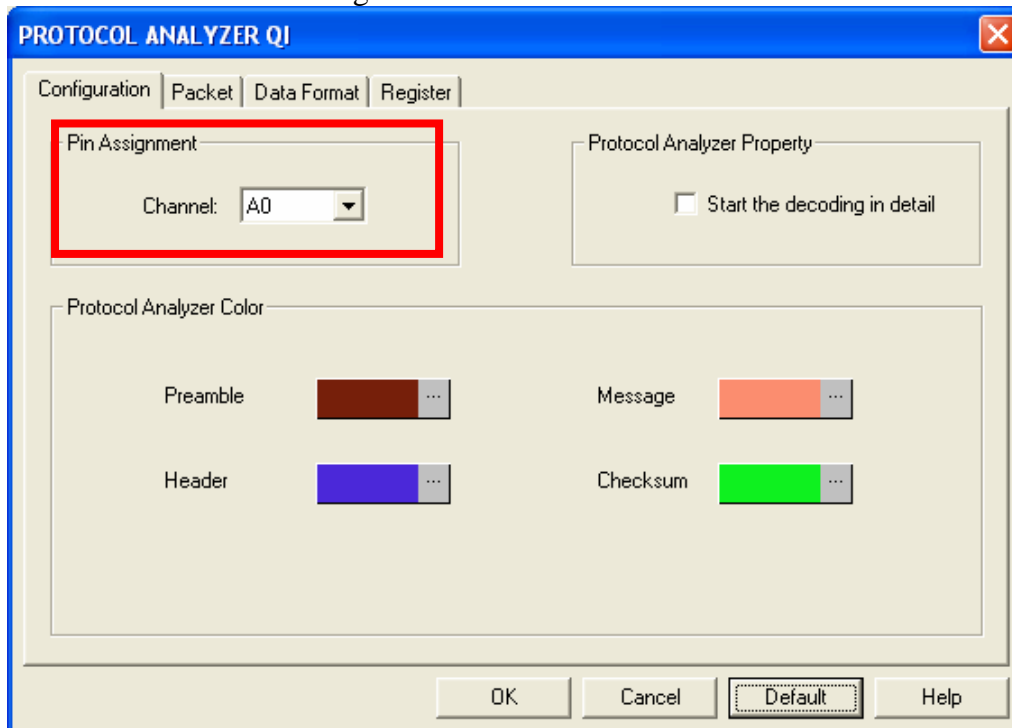
STEP 2. Select Bus1, press Right Key and select 'Bus Property' from the popup menu, or click Bus icon on the toolbar, to open Bus Property dialog box.



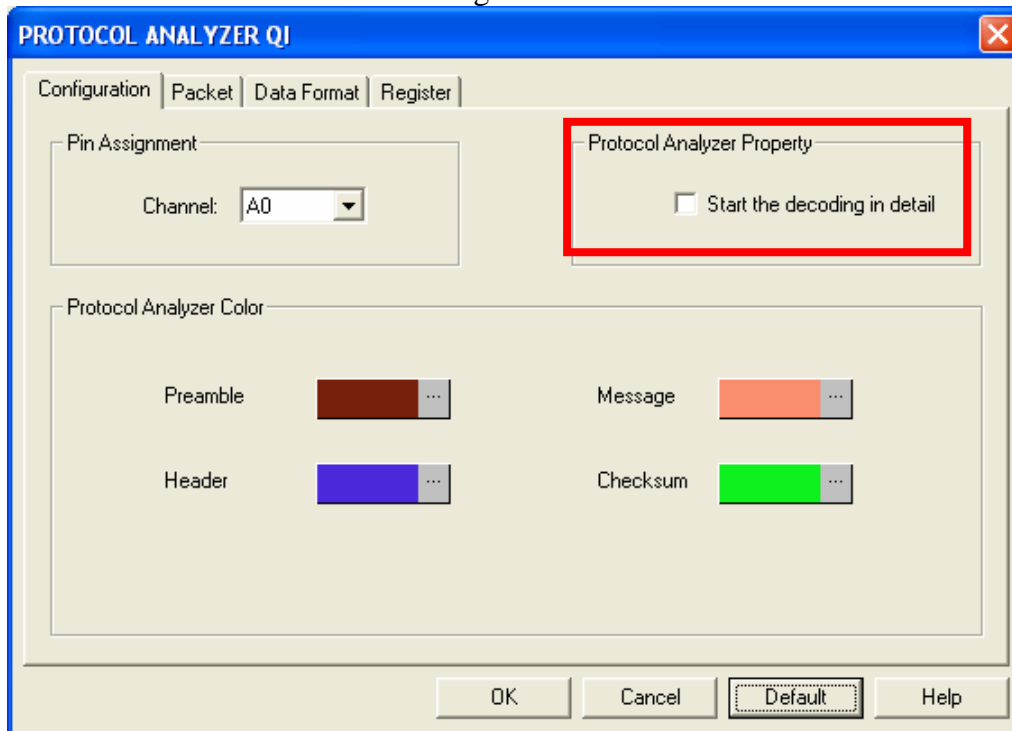
STEP 3. Select Protocol Analyzer, and then choose QI MODULE V1.00.01 (CN01). Next click 'Parameters Configuration' to open the configuration dialog box.



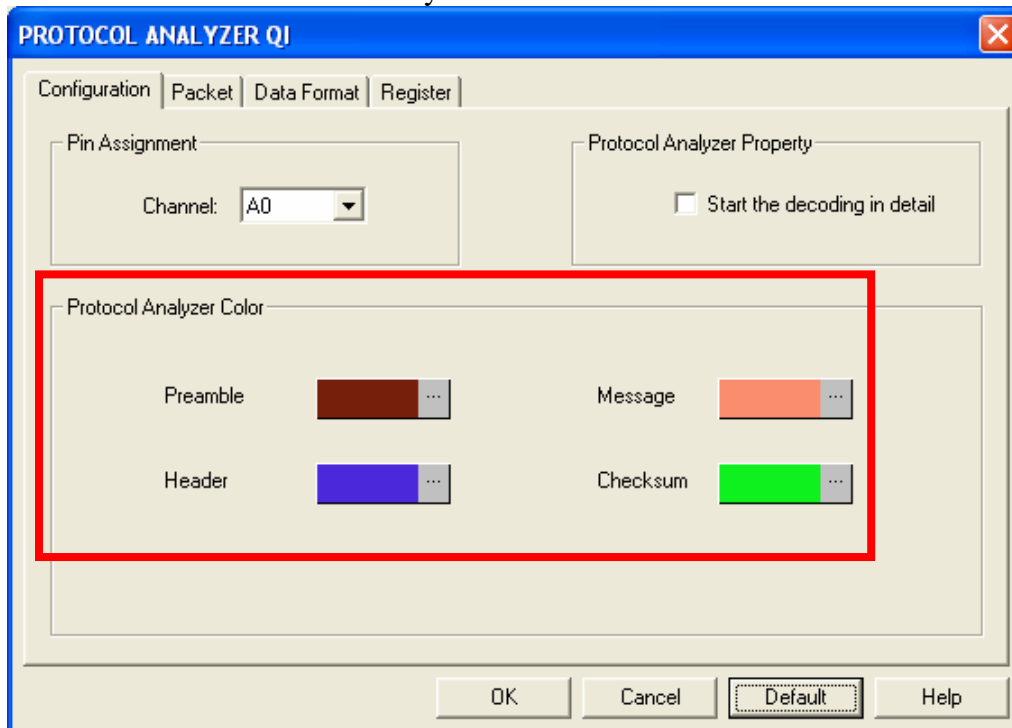
STEP 4. Set the Pin Assignment.



STEP 5. Set the 'Start the decoding in detail'.

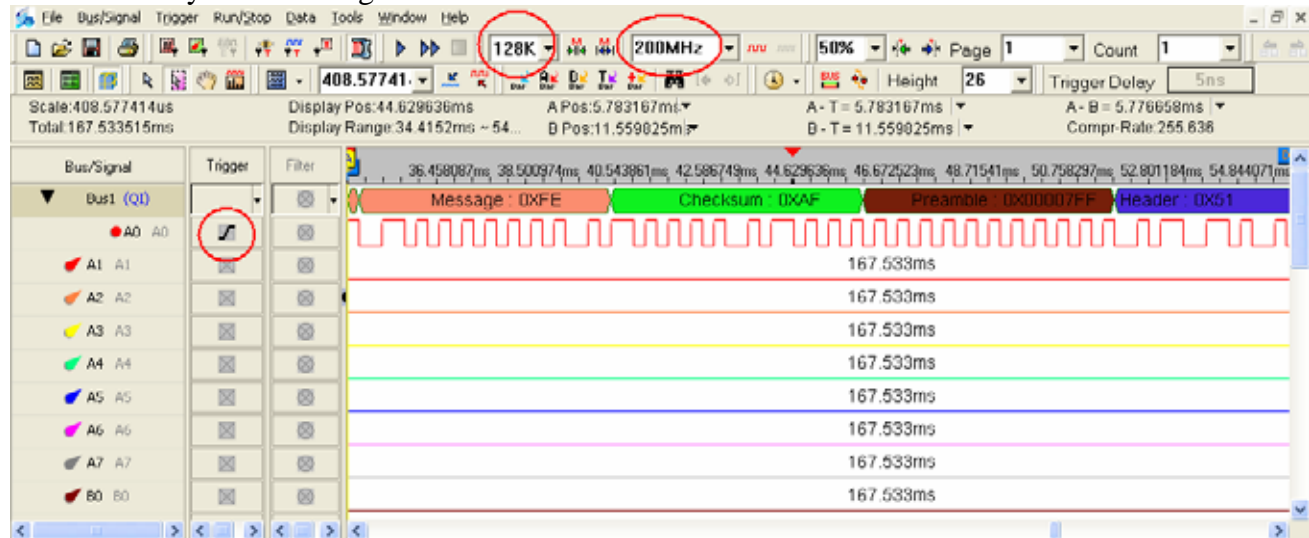


STEP 6. Set the Protocol Analyzer Color.



STEP 7. Following pictures show the completion of the protocol analyzer decoding and the packet list. The trigger condition is Rising Edge; the memory depth is 128K; the sampling frequency is 200MHz (the sampling frequency should be more than four times higher than the signal to be tested).

Protocol Analyzer Decoding



Packet List

